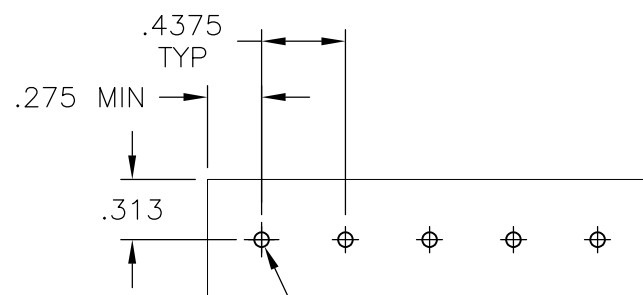
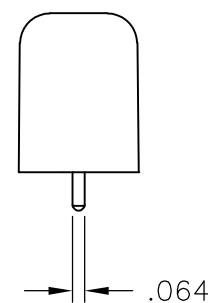
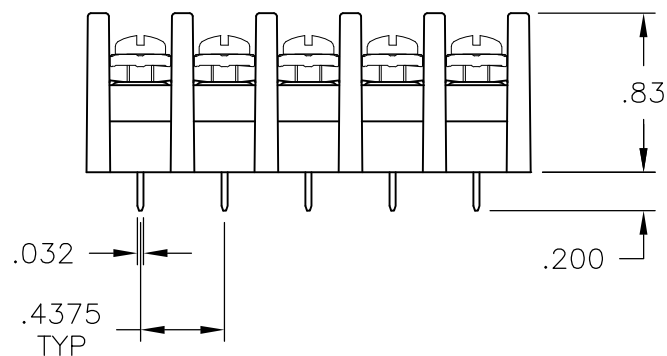
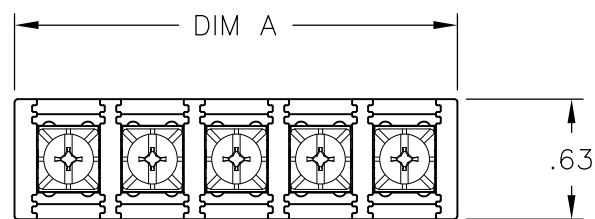


THIS DRAWING IS UNPUBLISHED. RELEASED FOR PUBLICATION
 © COPYRIGHT BY TYCO ELECTRONICS CORPORATION. ALL RIGHTS RESERVED.

LOC	DIST	REVISIONS			
P	LTR	DESCRIPTION	DATE	DWN	APVD
FT	0				
	01	REVISED PER ECO-08-015877	01JUL08	HMR	FD
	02	REVISED PER ECO-09-024927	10NOV09	KK	AEG



RECOMMENDED PCB LAYOUT

MATERIAL:
 HOUSING: THERMOPLASTIC, UL94V-2, BLACK.
 TERMINAL: BRASS, BRIGHT TIN PLATED.
 SCREWS: 6-32, STEEL, ZINC AND CHROMATE PLATED OR NICKEL OVER COPPER PLATED

ELECTRICAL:
 MAXIMUM CURRENT: 20A.
 OPERATING VOLTAGE: 600V.
 WIRE RANGE: 12 AWG MAX.

ENVIRONMENT:
 OPERATING TEMP.: -60°C TO +105°C.

- 3 WHITE INK MARKING, APPROX. AS SHOWN. (SEE PAGE 2)
- 4 PRELIMINARY PART NUMBER.
- 5 OBSOLETE PARTS: OBSOLETE CIS STREAMLINING PER D.RENAUD/D.SINISI

PLC	NO. OF POS.	CATALOG NUMBER	PART NUMBER
1 4	11.937 27	SSB7FP270202	2-1546984-7
1	11.500 26	SSB7FP260202	5-1437416-4
1	11.062 25	SSB7FP250202	5-1437416-3
1 4	10.625 24	SSB7FP240202	2-1546984-4
1 4	10.187 23	SSB7FP230202	2-1546984-3
1 4	9.750 22	SSB7FP220202	2-1546984-2
1 4	9.312 21	SSB7FP210202	2-1546984-1
1	8.875 20	SSB7FP200202	5-1437416-2
1 4	8.437 19	SSB7FP190202	1-1546984-9
1	8.000 18	SSB7FP18020212	5-1437416-1
1 4	8.000 18	SSB7FP180202	1-1546984-8
1	7.562 17	SSB7FP170202	5-1437416-0
1 4	7.125 16	SSB7FP160202	1-1546984-6
1	6.687 15	SSB7FP150202	4-1437416-7
1	6.250 14	SSB7FP140202	3-796602-3
1 4	5.812 13	SSB7FP130202	1-1546984-3
1	5.375 12	SSB7FP120202	4-1437416-1
1	4.937 11	SSB7FP110202	1-1546561-2
1	4.500 10	SSB7FP100202	3-1437416-5
1	4.062 9	SSB7FP090202	3-1437416-2
1	3.625 8	SSB7FP080202	2-1437416-8
1	3.187 7	SSB7FP070202	3-796602-2
1	2.750 6	SSB7FP060202	2-1437416-2
1	2.312 5	SSB7FP050202	1-1437416-7
1	1.875 4	SSB7FP040202	1-1437416-2
2	1.437 3	SSB7FP0320911	3-1546561-9
1 5	1.437 3	SSB7FP03020211	1546561-6
1	1.437 3	SSB7FP030202	1437416-8
1	1.000 2	SSB7FP020202	1437416-4

THIS DRAWING IS A CONTROLLED DOCUMENT.		DWN S SCHL GEL 16FEB04	Tyco Electronics Corporation Harrisburg, Pa 17105-3608	
DIMENSIONS: INCHES		CHK S YODER 2/16/04	NAME	
TOLERANCES UNLESS OTHERWISE SPECIFIED:		APVD S YODER 2/16/04	SSB7 ASSEMBLY	
0 PLC ± -		PRODUCT SPEC	SIZE	CAGE CODE
1 PLC ± -		APPLICATION SPEC	DRAWING NO	RESTRICTED TO
2 PLC ± .02		WEIGHT -	A3	00779
3 PLC ± .010		CUSTOMER DRAWING	G-3-796602-2	
4 PLC ± -		SCALE NTS	SHEET 1 OF 2	REV 02
ANGLES ± 1°				
FINISH -				

THIS DRAWING IS UNPUBLISHED.

RELEASED FOR PUBLICATION

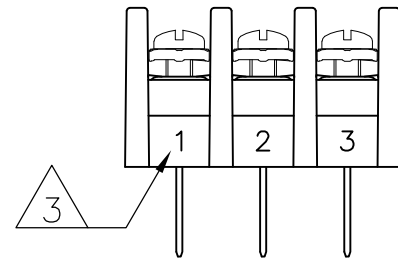
© COPYRIGHT - BY TYCO ELECTRONICS CORPORATION.

ALL RIGHTS RESERVED.

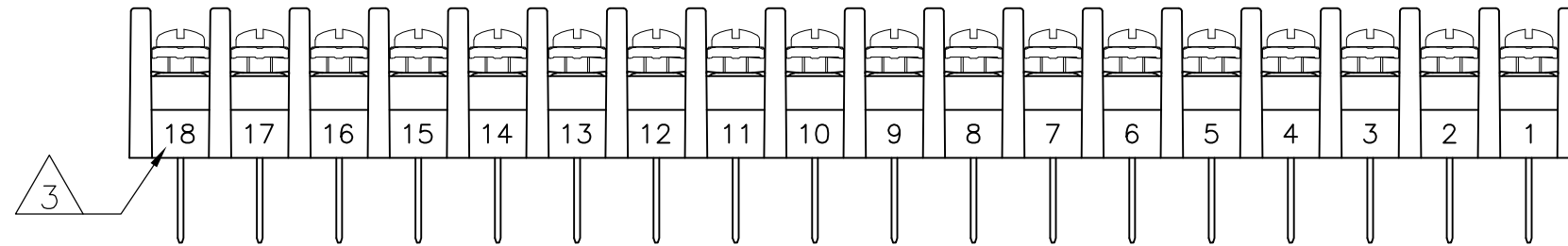
LOC FT DIST 0

REVISIONS

P	LTR	DESCRIPTION	DATE	DWN	APVD
-	-	SEE SHEET 1	-	-	-



5 OBSOLETE 1546561-6



5-1437416-1

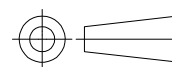
THIS DRAWING IS A CONTROLLED DOCUMENT.

DWN S SCHL GEL 16FEB04
 CHK S YODER 2/16/04
 APVD S YODER 2/16/04

Tyco Electronics
 Tyco Electronics Corporation
 Harrisburg, Pa 17105-3608

DIMENSIONS:
INCHES

TOLERANCES UNLESS OTHERWISE SPECIFIED:



0 PLC ± -
 1 PLC ± -
 2 PLC ± .02
 3 PLC ± .010
 4 PLC ± -
 ANGLES ± 1°

PRODUCT SPEC -
 APPLICATION SPEC -
 WEIGHT -

NAME SSB7 ASSEMBLY
 SIZE A3 CAGE CODE 00779 DRAWING NO C-3-796602-2 RESTRICTED TO -

MATERIAL -

FINISH -

CUSTOMER DRAWING SCALE NTS SHEET 2 OF 2 REV 02